



Customer: The Hemp Doctor  
 Address: 118 Ewart Pl.  
 Mooresville, NC 28177  
 Sample ID: 1000mg/300mg D8/CBN Tincture - Bubblegum  
 Matrix: Tincture  
 Labnumber: 21J0055-13 Total mass or volume per unit (g or mL): 30 Density (g/mL): .954

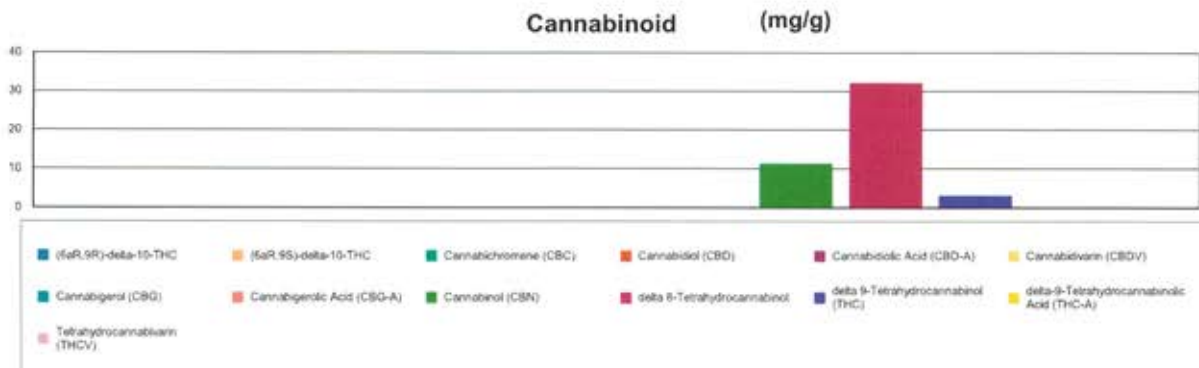
## Cannabinoid Profile

Test Conditions: 19°C  
 Extraction Technician: SH  
 Analytical Chemist: CB

Extraction Date(s)	Analysis Date(s)
12/23/2022	12/23/2022

Cannabinoids (HPLC)		Results		
	LOD (mg/g)	%	mg/g	mg/Bottle
Cannabidivarin (CBDV)	<0.20			
Cannabidiolic Acid (CBD-A)	<0.20			
Cannabigerolic Acid (CBG-A)	<0.20			
Cannabigerol (CBG)	<0.20			
Cannabidiol (CBD)	<0.20			
Tetrahydrocannabivarin (THCV)	<0.20			
Cannabinol (CBN)		1.12	11.2	337
Cannabichromene (CBC)	<0.20			
delta 9-Tetrahydrocannabinol (THC)		0.31	3.13	93.8
delta-9-Tetrahydrocannabinolic Acid (THC-A)	<0.30			
delta 8-Tetrahydrocannabinol		3.22	32.2	967
(6aR,9S)-delta-10-THC	<0.30			
(6aR,9R)-delta-10-THC	<0.30			
<b>Cannabinoids Total</b>		<b>%</b>	<b>mg/g</b>	
Max Active THC (delta-9-tetrahydrocannabinol)		0.31	3.13	
Max Active CBD		0.00	0.00	
T.Active Cannabinoids		1.44	14.40	
Total Cannabinoids		4.66	46.60	

Following USDA guidelines on uncertainty, Altitude Consulting's uncertainty is calculated to be +/- 2% for all cannabinoids using a coverage factor of 2 (95% confidence interval). Measurement uncertainty has not been factored into reported values.  
 Blank results indicate the compound was below the limit of detection.



**Gary Brook - Laboratory Director - 12/23/2022**

Reporting Limits will vary based on sample extraction weight used for the analysis.

The results of this report are based solely on the sample submitted and cannot be reproduced. Decision Rule: Measurement uncertainty is not accounted for in the reported values.

Results are based solely on calculated numbers. Altitude Consulting makes no Statements of conformity. Pesticide, metal, and microbial analyses are subcontracted to ISO 17025 laboratories.